

CATALOG



สินค้า

แนะนำ

SUNPOC

รวมเครื่องทดสอบแรงดึง-กด SUNPOC



LINE : @ITOKIN2000.COM

TEL : 02-9744354-6

EMAIL : SALESITOKIN@GMAIL.COM

UNIVERSAL TESTING MACHINE (UTM)

C1100- Smart Electronic Pull Tensile Testing Machine



C1100- Smart electric pull tensile testing machine, move by motor and with digital push force meter measure unit, is mainly used to test plastic sheet, pipe, paper, leather, plastic film and rubber, wire and cable, waterproof coil, wire and other materials, with different fixtures can be measured tensile compression, bending peel, displacement, tear, Insertion and extraction forces, tensile damage and other tests, tensile testing machine is ideal testing equipment for industrial and mining, commodity inspection arbitration, research institutes, universities, engineering quality supervision stations and other departments.

UNIVERSAL TESTING MACHINE (UTM)

Measuring range: 10~500N (50kg)

Test move stroke: 350 mm

Induction method: digital push force meter

Test speed: 5 ~ 300mm/min adjustable

Power System: AC Motor

Volume: 560×345×1080mm

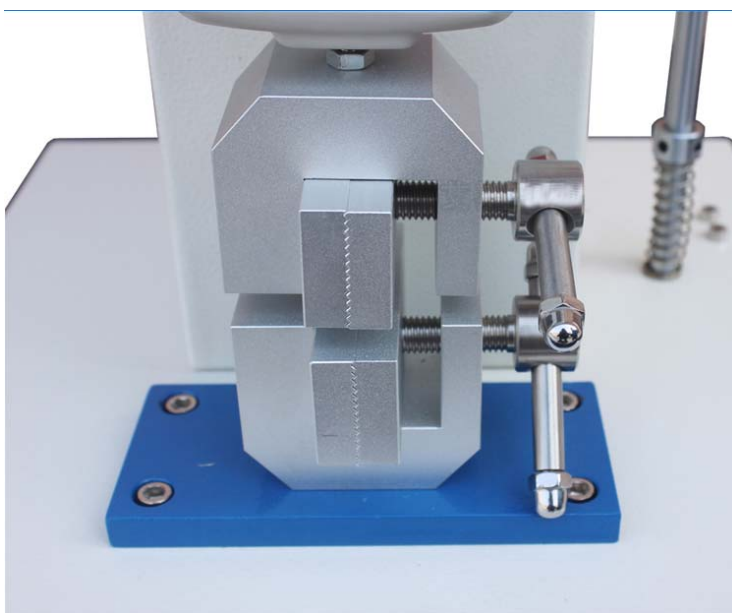
Weight: 30Kg

Power Supply: AC220V 50Hz



180° peel

90° peel



Smart-C1100 Electronic Pull Tensile Testing Machine

Smart-C1100 electric pull tensile testing machine, move by motor and with digital push force meter measure unit, is mainly used to test plastic sheet, pipe, paper, leather, plastic film and rubber, wire and cable, waterproof coil, wire and other materials, with different fixtures can be measured tensile compression, bending peel, displacement, tear, Insertion and extraction forces, tensile damage and other tests, tensile testing machine is ideal testing equipment for industrial and mining, commodity inspection arbitration, research institutes, universities, engineering quality supervision stations and other departments.

UNIVERSAL TESTING MACHINE (UTM)



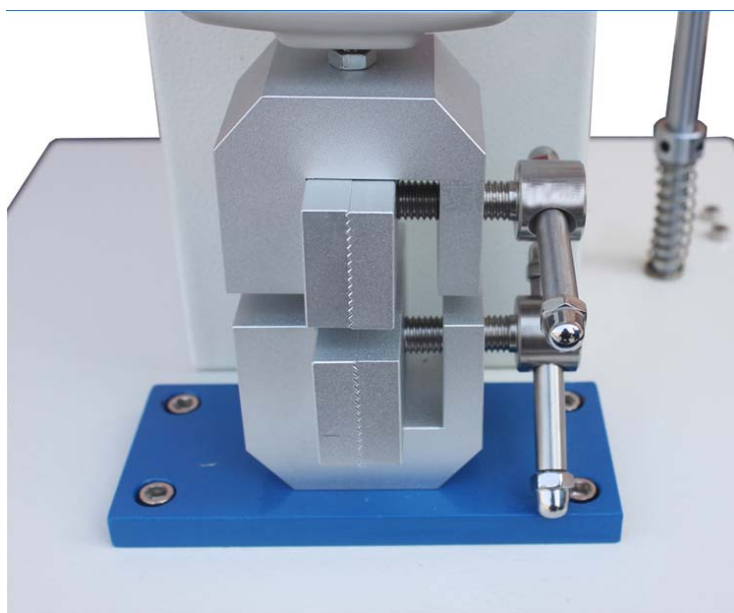
Measuring range: 10~500N (50kg)
Test move stroke: 350 mm
Induction method: digital push force meter
Test speed: 5 ~ 300mm/min adjustable
Power System: AC Motor
Volume: 560×345×1080mm
Weight: 30Kg
Power Supply: AC220V 50Hz



180 °peel



90 °peel

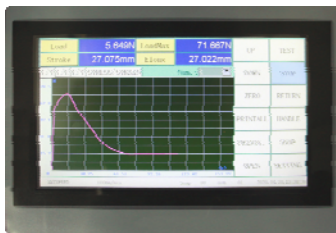


UNIVERSAL TESTING MACHINE (UTM)

C2200 Electronic Universal Testing Machine



C2200- Series digital panel control electronic universal testing machine is compacted and easy operating for users. It's widely used in materials tensile, compression, bending, peeling, shearing stretching tearing etc. The machine middle crossgirder is guided by high precision guide rod, which has high rigidity and good linear motion features. Varied fixtures fit for different samples, load cell sensors, deformation measurement sensors and other accessories can meet almost all customer's needs. The flexible and easy operating software makes the user's testing process easier. Test solutions cover plastics, metals, automotive, building materials, textiles, paper and board, food and packaging, and composites.



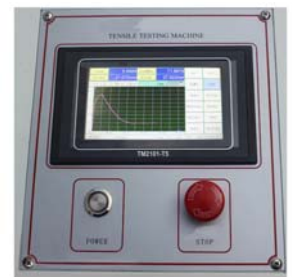
Touch screen curve display



180° peel

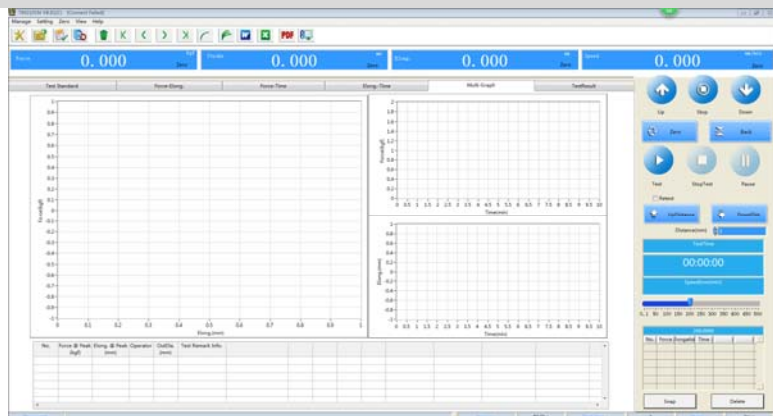


90° peel



Various multifunctional fixture, can meet all kinds of material

Test machine can connect with multifunctional test software, working for win7, win10 system. free flexible edit test standard.

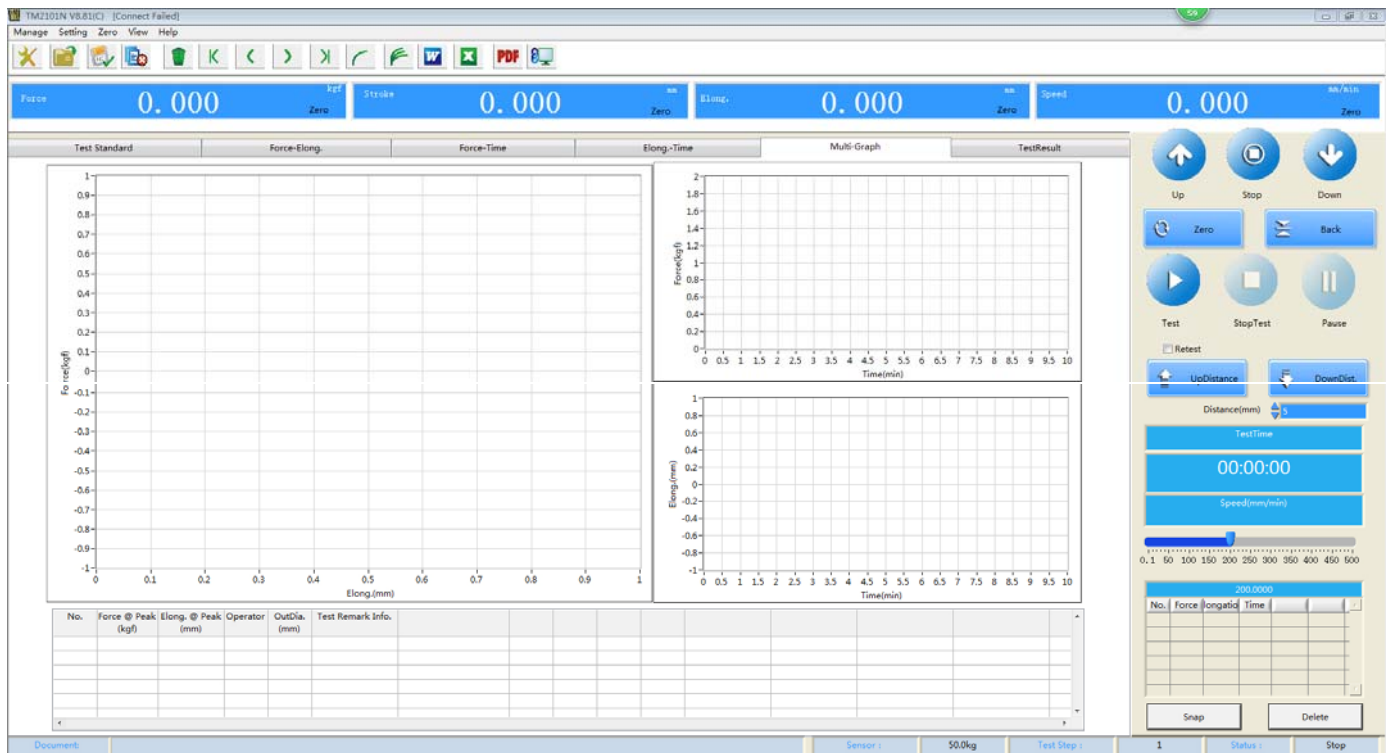


UNIVERSAL TESTING MACHINE (UTM)



Specification list:

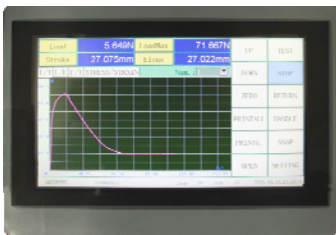
standard model	C2202	C2202	C3304	C3305
max testing force	100N 200N 500N	1000N	2000N	5000N
	10kg 20kg 50kg	100kg	200kg	500kg
force unit	Kgf, gf, N, kN, lbf			
deformation force unit	MPa, kPa, kgf/cm2, lbf/in2			
test grade	1 class	1 class	1 class	1 class
testing force accuracy	±1%	±1%	±1%	±1%
testing force range	1%-100%Fs	1%-100%Fs	1%-100%Fs	1%-100%Fs
force resolution	1/200000Fs	1/200000Fs	1/200000Fs	1/200000Fs
deformation accuracy	±1%	±1%	±1%	±1%
deformation resolution	0.001mm	0.001mm	0.001mm	0.001mm
displacement accuracy	±1%			
displacement resolution	0.001mm	0.001mm	0.001mm	0.001mm
speed range (mm/min)	0.001~300	0.001~300	0.001~300	0.001~300
crosshead move range	700mm	700mm	1100	1100
pull space	450mm	450mm	450mm	750mm
push space	450mm	450mm	450mm	750mm
test wide	150	150	150	150
grip body	one suit	one suit	one suit	one suit
flat jaw(mm)	0-7	0-7	0-7	0-7
round jaw(mm)	optional	optional	optional	optional
pressure plate(mm)	x1	x1	x1	x1
extensometer	optional	optional	optional	optional
large deformation	optional	optional	optional	optional
motor	servo motor	servo motor	servo motor r	servo motor
power supply	110-220V 50/60Hz	110-220V 50/60Hz	110-220V 50/60Hz	110-220V 50/60Hz
weight	40kg	40kg	40kg	65kg



C3300 Electronic Universal Testing Machine



C3300- Series digital panel control electronic universal testing machine is compacted and easy operating for users. It's widely used in materials tensile, compression, bending, peeling, shearing stretching tearing etc. The machine middle crossgirder is guided by high precision guide rod, which has high rigidity and good linear motion features. Varied fixtures fit for different samples, load cell sensors, deformation measurement sensors and other accessories can meet almost all customer's needs. The flexible and easy operating software makes the user's testing process easier. Test solutions cover plastics, metals, automotive, building materials, textiles, paper and board, food and packaging, and composites.



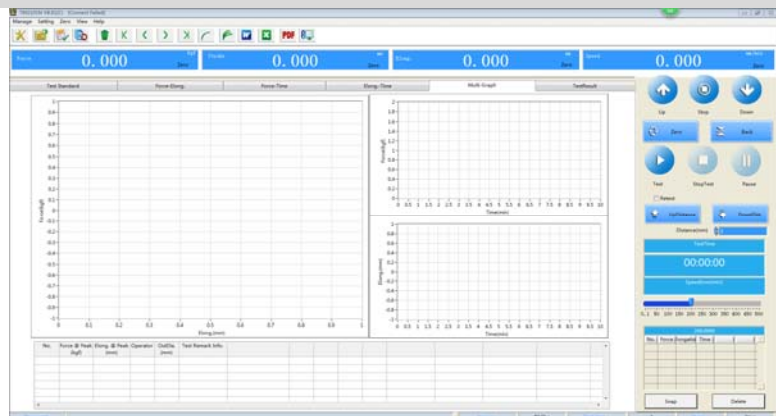
Touch screen curve display



Various multifunctional fixture, can meet all kinds of material



Test machine can connect with multifunctional test software, working for win7, win10 system. free flexible edit test standard.

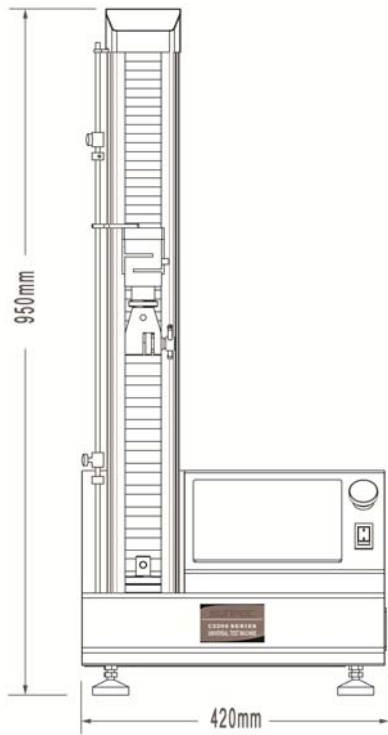


UNIVERSAL TESTING MACHINE (UTM)

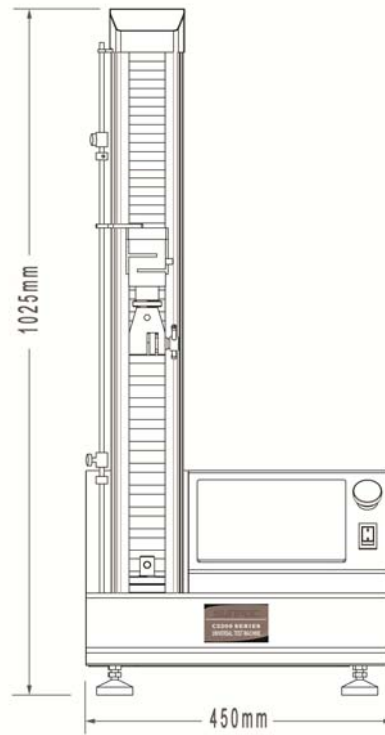


Specification list:

standard model	C3342	C3343	C3344	C3345
max testing force	0.2Kn/0.5Kn	1Kn	2Kn	5Kn
test grade	1 class	1 class	1 class	1 class
testing force accuracy	±0.5%	±0.5%	±0.5%	±0.5%
testing force range	1%-100%Fs	1%-100%Fs	1%-100%Fs	1%-100%Fs
force resolution	1/300000Fs	1/300000Fs	1/300000Fs	1/300000Fs
deformation accuracy	±1%	±1%	±1%	±1%
deformation resolution	0.001mm	0.001mm	0.001mm	0.001mm
displacement accuracy	±0.5%	±0.5%	±0.5%	±0.5%
displacement resolution	0.001mm	0.001mm	0.001mm	0.001mm
speed range (mm/min)	0.001~500	0.001~500	0.001~500	0.001~500
crosshead move range	700mm	700mm	1100	1100
pull space	450mm	450mm	450mm	750mm
push space	450mm	450mm	450mm	750mm
test wide	150	150	150	150
grip body	one suit	one suit	one suit	one suit
flat jaw(mm)	0-7	0-7	0-7	0-7
round jaw(mm)	optional	optional	optional	optional
pressure plate(mm)	x1	x1	x1	x1
extensometer	optional	optional	optional	optional
large deformation	optional	optional	optional	optional
motor	step motor	step motor	step motor	step motor
power supply	110-220V 50/60Hz	110-220V 50/60Hz	110-220V 50/60Hz	110-220V 50/60Hz
machine dimension(mm)	420×370×950mm	420×370×950mm	420×370×950mm	450×420×1250mm
weight	55kg	55kg	55kg	65kg



C3342, C3343, C3344

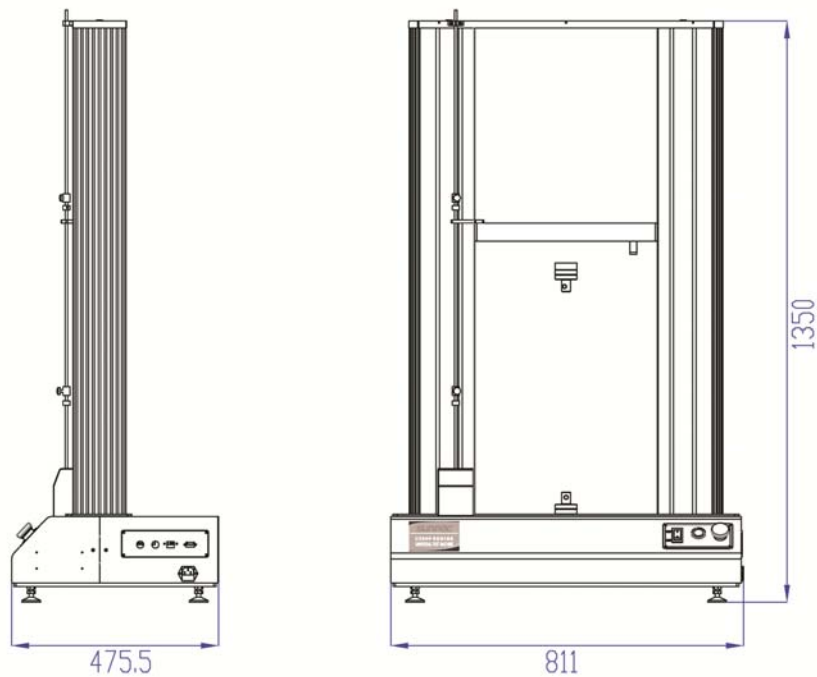


C3345

UNIVERSAL TESTING MACHINE (UTM)

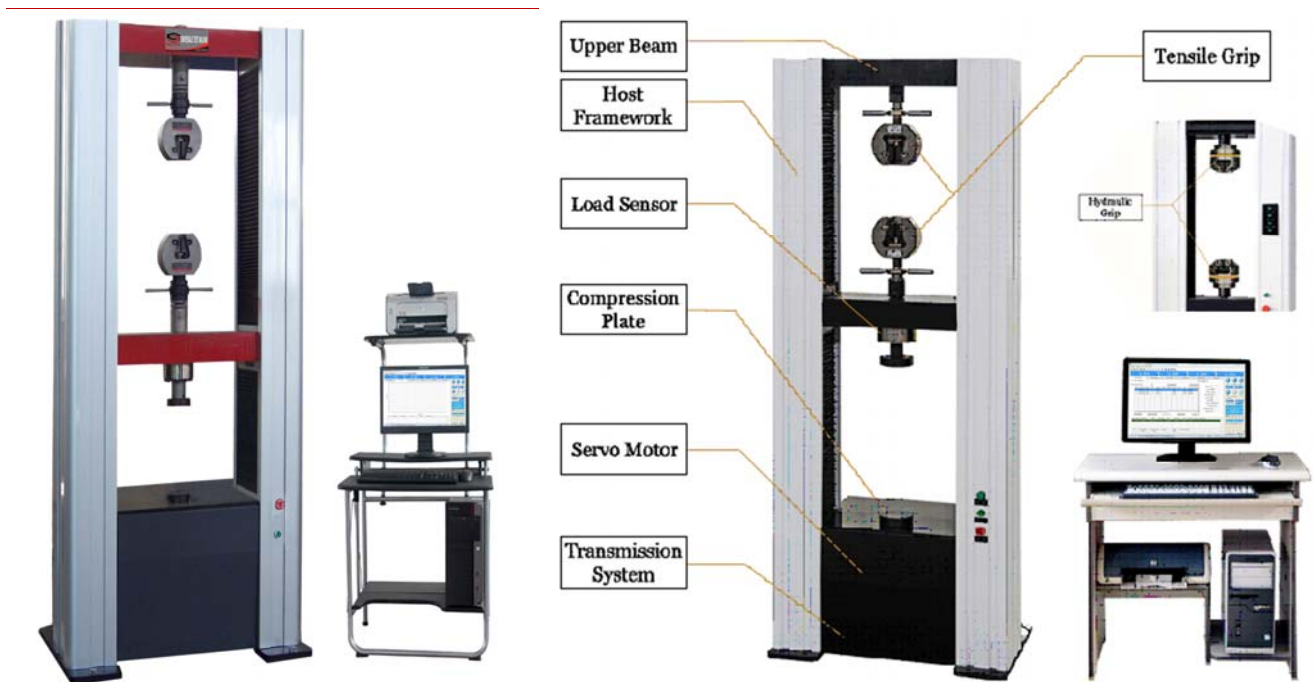


standard model	C3362	C3363	C3364	C3365
column	double column	double column	double column	double column
max testing force	2Kn/5Kn	10Kn	20Kn	50Kn
test grade	0.5 class	0.5 class	0.5 class	0.5 class
testing force accuracy	±0.5%	±0.5%	±0.5%	±0.5%
testing force range	1%-100%Fs	1%-100%Fs	1%-100%Fs	1%-100%Fs
force resolution	1/300000Fs	1/300000Fs	1/300000Fs	1/300000Fs
deformation accuracy	±1%	±1%	±1%	±1%
deformation resolution	0.001mm	0.001mm	0.001mm	0.001mm
displacement accuracy	±0.5%	±0.5%	±0.5%	±0.5%
displacement resolution	0.001mm	0.001mm	0.001mm	0.001mm
speed range (mm/min)	0.5~500	0.5~500	0.5~500	0.5~500
crosshead move range	700mm	700mm	700mm	700mm
pull space	700mm	700mm	700mm	700mm
push space	700mm	700mm	700mm	700mm
test wide	420	420	420	420
grip body	one suit	one suit	one suit	one suit
flat jaw(mm)	0-7	0-7	0-7	0-7
round jaw(mm)	optional	optional	optional	optional
pressure plate(mm)	x1	x1	x1	x1
extensometer	optional	optional	optional	optional
large deformation	optional	optional	optional	optional
motor	servo motor	servo motor	servo motor	servo motor
power supply	110-220V 50/60Hz	110-220V 50/60Hz	110-220V 50/60Hz	110-220V 50/60Hz
machine dimension(mm)	720×520×1300mm	720×520×1300mm	720×520×1300mm	720×520×1300mm
weight	150kg	150kg	150kg	150kg



C3362, C3363, C3364, C3365

C3370 Electronic Universal Testing Machine



C3370 Series microcomputer control electronic universal testing machine is compacted and easy operating for users. It's widely used in materials tensile, compression, bending, peeling, shearing stretching tearing etc. The machine middle crossgirder is guided by high precision guide rod, which has high rigidity and good linear motion features. Varied fixtures fit for different samples, load cell sensors, deformation measurement sensors and other accessories can meet almost all customer's needs. The flexible and easy operating software makes the user's testing process easier. Test solutions cover plastics, metals, automotive, building materials, textiles, paper and board, food and packaging, and composites.

Main features:

1. The high-precision ball screw pair makes the transmission more stable and the machine has high rigidity and stable operation;
2. Wide test range to maximize customer satisfaction;
3. Servo motor drive, high precision and fast response;
4. High precision load sensor with high precision and good stability.
5. The middle crossgirder is guided by four guide rods and graphite self-lubricating sleeve. The strong guiding light bar increases the lateral rigidity of the equipment and ensures the linear movement of the beam. It enables accurate alignment of the cross head, reduces measurement data differences, and gets high accuracy;
6. The measurement resolution of force and deformation reaches 1/300000 of full scale;
7. AD sampling frequency can be up to 300Hz;
8. Based on the high-end industrial control SOC high-end microprocessor as a system platform, integrating measurement and control, the function is more powerful and the performance is more stable;
9. The three-closed full-digital control of force, deformation and displacement is used to automatically switch between control loops and make a smooth transition. The control algorithm adopts advanced neuron adaptive PID control algorithm, which can easily complete professional test tasks without the need for cumbersome PID parameter setting.
10. 4-channel 24-bit A/D high-precision data acquisition channel with advanced digital filtering technology, collecting data

more accurately, stably and reliably;

11. 2-channel high-speed photoelectric encoder (5MHz) signal acquisition channel, optional measurement accessories for outputting optical code signals;

12. 10M Ethernet is used as the data interface to facilitate the expansion of various measurement accessories;

13. It adopts ultra-large-scale programmable digital integrated circuit design, small size, low power consumption, less heat generation, and stable and reliable working characteristics.

Software features:

The testing software provides a simple and intuitive operator interface for a variety of materials or industry tests, powerful user-programmable interaction capabilities, comprehensive analysis and reporting capabilities, and a large number of standard test methods built into it. That is, it can meet the requirements of simple, easy-to-use and high-efficiency required for quality control, and can meet the individualized test requirements required by research institutes to study material properties in depth.

Specification list:

standard model	C3372	C3373	C3374
max testing force	50kN	100kN	200kN
test grade	1 class		
testing force accuracy	±1%		
testing force range	1%-100%Fs		
force resolution	1/300000Fs		
deformation accuracy	±1%		
deformation resolution	0.001mm	0.001mm	0.001mm
displacement accuracy	±0.5%	±0.5%	±0.5%
displacement resolution	0.002mm	0.002mm	0.002mm
speed range (mm/min)	0.001~500	0.001~500	0.001~500
control accuracy	±1%		
crosshead move range	1100	1100	1100
pull space	700mm	700	700
push space	700mm	700	700
test wide	450	450	450
grip body	one suit	one suit	one suit
flat jaw(mm)	0-7	0-7	0-9
	7-14 (O)	7-14 (O)	9-18 (O)
	14-20(O)	14-20(O)	18-27(O)
round jaw(mm)	Φ4~Φ9	Φ4~Φ9	Φ4~Φ10
	Φ9-Φ14 (O)	Φ9-Φ14 (O)	Φ10~Φ16(O)
	Φ14-Φ20(O)	Φ14-Φ20(O)	Φ16~Φ25(O)
pressure plate(mm)	Φ100 x1	Φ100 x1	Φ120 x1
bending clamp	(optional)	(optional)	(optional)
extensometer	10/50mm(optional)		
Large deformation	Large deformation extensometer 0-800mm(optional)		
motor	servo motor	servo motor	servo motor
power supply	220V	220V	220V
machine dimension(mm)	850X480X1865	100X550X2076	1050X700X2421
weight	650Kg	800Kg	1000Kg

Software: TM210

TM2101N V8.57(C) [Connect Failed]

Manage Setting Zero View Help

Force 0.000 kgf Zero Elong. 0.000 mm Zero Stroke 0.000 mm Zero MaxForce 0.000 kgf Zero

Test Standard Force-Elong. Force-Time Elong.-Time Multi-Graph TestResult

Up Stop Down
Zero Back
Test StopTest Pause
 Retest
UpDistance DownDist.
Distance(mm) 5
TestTime
00:00:00
Speed(mm/min)
0.1 100 200 300 400 500
46.037

No.	Force @ Peak (kgf)	Elong. @ Peak (mm)	Operator	OutDia. (mm)	Test Remark Info.

Document: E:\Mingo\builds\串口带网络\TM2101N V8.57\TestData\最大力.mdb Sensor: 50.0kg Test Step: 1 Status: Stop

TM2101N V8.57(C) [Connect Failed]

Manage Setting Zero View Help

Force 0.000 kgf Zero Elong. 0.000 mm Zero Stroke 0.000 mm Zero MaxForce 0.000 kgf Zero

Test Standard MaxForce

SpecimenSelect Paper

Index	Test Type	Name	No.	Shape	Width	Thicknes	Out_Dia.	In_Dia.	Area	GaugeLe	LoadSpa
1	tsile/Compi	Paper	1	Round	-	-	9.000	-	63.617	100.000	-
2	tsile/Compi	Paper	2	Round	-	-	9.000	-	63.617	100.000	-
3	tsile/Compi	Paper	3	Round	-	-	9.000	-	63.617	100.000	-

Operator: 0
Product: 松紧带
Lot No.: AAA_2_B
ProductSN: 10001
Custome: 日芯
Quality: 橡胶
Test No.: 20150814-001
Date: 2015-08-14
Temperature: 25°C
Humidity: 50%

Stage	irection	ControlType	Value	ift Conditio	Value	PauseTime	Percent	extProces	CycleTimes	NextProcess
1	ompres	FixSpeed	50.000mm/min	Force >=	1.000kgf	0.000min	100.00	End		

No.	Force @ Peak (kgf)	Elong. @ Peak (mm)	Operator	OutDia. (mm)	Test Remark Info.

Document: E:\Mingo\builds\串口带网络\TM2101N V8.57\TestData\最大力.mdb Sensor: 50.0kg Test Step: 1 Status: Stop

WAW – 300B Hydraulic Universal Testing Machine



WAW – B type of microcomputer electro-hydraulic servo controlling universal testing machine, the series universal testing machine is economy and utility mode, It is used for the strenthing, compressing, bending and shearing test for metal materials , if configure relevant accessories, it can be used for doing experiment for non-metal materials such as wood , cement, concrete, rubber. It is practical inspection device for building industrial, mining and universities.

- The principal machine is compact , economical and practical;
- With underneath oil cylinder, fixing gap guilding, simple and reliable ;
- Protective rubber sheet, prevent foreign body fall into the slide, and protect the jaw clamp and reduce the friction ;
- A curved support a direct link on the desk, increase the space ;
- Motor driver sprockets, chain drives, adjust the space ;
- Microcomputers table type oil source ,electric control cabinet ,low noise independence chuck oil sources;
- proprietary inserting card type full digital and loop controlling system ,realized the testing force and displacement, deformation loop controlled, fully satisfy GB/ T228 – 2002's requirements of <<the metal room stretch the test methods>> ;
- The principal machine has low height , which is convenient for of transportation and installation。





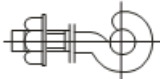


UNIVERSAL TESTING MACHINE (UTM)



Specification list:



model	WAW-300B	WAW-600B
columns	4 columns (2Stand columns, 2 guide screw)	4 columns (2Stand columns, 2 guide screw)
max.force	300kN	600kN
grade	1	1
force range	2%-100%FS	2%-100%FS
force resolution	1/500000	1/500000
force accuracy	±1%	±1%
displacement resolution	0.01mm	0.01mm
displacement accuracy	±0.5%	±0.5%
deformation range	1%-100%FS	1%-100%FS
deformation resolution	1/500000mm	1/500000mm
deformation accuracy	±0.5%	±0.5%
wedge clamp	hydraulic auto clamp	hydraulic auto clamp
round specimen	Φ13-Φ20 Φ20-Φ32(optional)	Φ13-Φ20 Φ20-Φ32(optional)
flat specimen thickness	0-15mm, 15-30mm(optional)	0-15mm, 15-30mm(optional)
flat specimen wide	75mm	75mm
press plate size	Φ120mm	Φ120mm
pull space	800mm	800mm
compression space	500mm	500mm
wide	500mm	500mm
weight	(machine) kgs 1850 (oil sources) kgs 300	(machine) kgs 1850 (oil sources) kgs 300
power	2.75KW 380V, 50HZ or 220V/60HZ	2.75KW 380V, 50HZ or 220V/60HZ

Configurations:

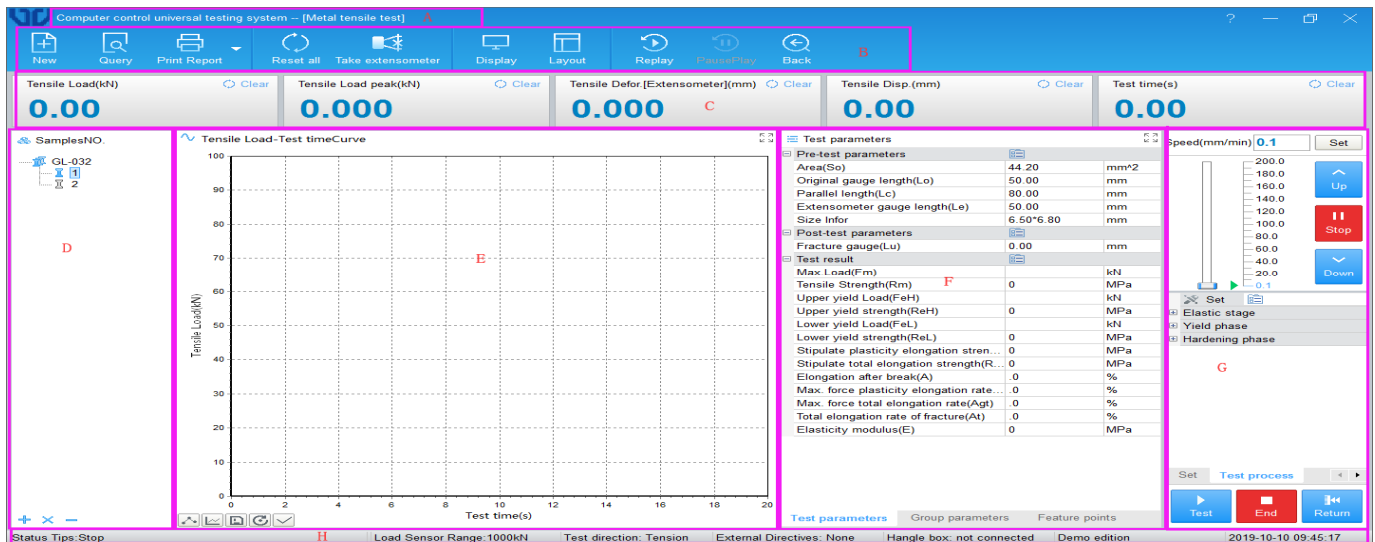
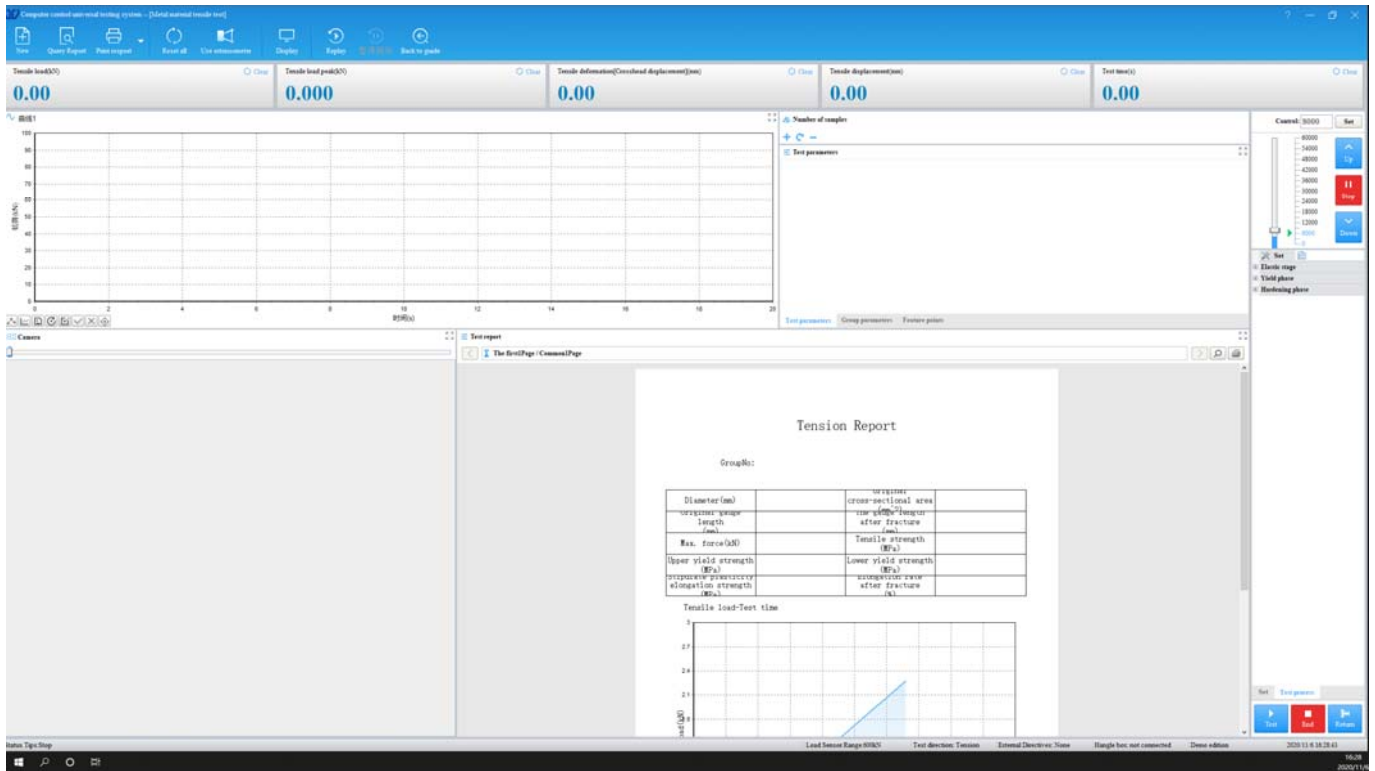
Item	Quantity	Remarks	Picture
Host WAW-300B 300kN			
High strength main unit	1 set	four screws and two columns	
Tensile fixture (Round Jaw)	1 set	Φ13-Φ20, Φ20-Φ32mm(optional)	
Tensile fixture (Flat Jaw)	1 set	0-15mm, 15-30mm(optional)	
Compression fixture	1 set	Φ160mm	
Bending fixture	1 set	Pressure Head: Φ30mm wide 160mm (optional)	
Foundation bolt	4 set		
Oil pressure sensor	1 set		
Linear photoelectric encoder	1 set		
Oil source control cabinet			
Computer display Oil Sources	1 set	Desktop	

UNIVERSAL TESTING MACHINE (UTM)



Oil pump	1 set	Italy imported Marzocchi	
Control System			
Control PC	1set	Lenovo famous brand	
Printer	1set	HP	
Special data acquisition card	1 suit	English language	
Extensometer	1set	(optional)	
Control software	1 suit		
Hand Control Box	1set		

Software: SMARTTEST



WES – 300B Digital Display Hydraulic Universal Testing Machine



WEW – 300B digital display universal testing machine, the series universal testing machine is economy and utility mode, It is used for the strengthening, compressing, bending and shearing test for metal materials , if configure relevant accessories, it can be used for doing experiment for non-metal materials such as wood , cement, concrete, rubber. It is practical inspection device for building industrial, mining and universities.

- The principal machine is compact, economical and practical;
- With underneath oil cylinder, fixing gap guiding, simple and reliable ;
- Protective rubber sheet, prevent foreign body fall into the slide, and protect the jaw clamp and reduce the friction ;
- A curved support a direct link on the desk, increase the space ;
- Motor driver sprockets, chain drives, adjust the space ;
- Microcomputers table type oil source, manual valve control cabinet, low noise independence chuck oil sources;
- proprietary inserting card type full digital and loop controlling system ,realized the testing force and displacement, deformation loop controlled, fully satisfy GB/ T228 – 2002's requirements of <<the metal room stretch the test methods>> ;
- The principal machine has low height , which is convenient for of transportation and installation。

Specification list:

model	WES-300B	WES-600B
columns	4 columns (2Stand columns, 2 guide screw)	4 columns (2Stand columns, 2 guide screw)
max.force	300kN	600kN
grade	1	1
force range	2%-100%FS	2%-100%FS
force resolution	1/500000	1/500000
force accuracy	±1%	±1%
displacement resolution	0.01mm	0.01mm
displacement accuracy	±0.5%	±0.5%
deformation range	1%-100%FS	1%-100%FS
deformation resolution	1/500000mm	1/500000mm
deformation accuracy	±0.5%	±0.5%
wedge clamp	hydraulic auto clamp	hydraulic auto clamp
round specimen	Φ13-Φ20 Φ20-Φ32(optional)	Φ13-Φ20 Φ20-Φ32(optional)
flat specimen thickness	0-15mm, 15-30mm(optional)	0-15mm, 15-30mm(optional)
press plate size	Φ120mm	Φ120mm
pull space	800mm	800mm
compression space	500mm	500mm
wide	500mm	500mm
weight	(machine) kgs 1850 (oil sources) kgs 300	(machine) kgs 1850 (oil sources) kgs 300
power	2.75KW 380V, 50HZ	2.75KW 380V, 50HZ

Configurations:

Item	Quantity	Remarks	Picture
Host WES-300B			
High strength main unit	1 set	four screws and two columns	
Tensile fixture (Round Jaw)	1 set	Φ0-Φ20, Φ20-Φ32mm(optional)	
Tensile fixture (Flat Jaw)	1 set	0-15mm, 15-30mm(optional)	
Compression fixture	1 set	Φ160mm	
Bending fixture	1 set	Pressure Head: Φ30mm wide 160mm (optional)	
Foundation bolt	4 set		
Oil pressure sensor	1 set		
Linear photoelectric encoder	1 set		
Oil source control cabinet			
Computer display Oil Sources	1 set	Desktop	
Oil pump	1 set	Italy imported Marzocchi	
Control System			
Extensometer	1set	(optional)	
Control software	1 suit		
Hand Control Box	1set		

WEW – 300B Hydraulic Universal Testing Machine



WEW – B type of microcomputer display universal testing machine, the series universal testing machine is economy and utility mode, It is used for the stretching, compressing, bending and shearing test for metal materials , if configure relevant accessories, it can be used for doing experiment for non-metal materials such as wood , cement, concrete, rubber. It is practical inspection device for building industrial , mining and universities.

- The principal machine is compact, economical and practical;
- With underneath oil cylinder, fixing gap guiding, simple and reliable ;
- Protective rubber sheet, prevent foreign body fall into the slide, and protect the jaw clamp and reduce the friction ;
- A curved support a direct link on the desk, increase the space ;
- Motor driver sprockets, chain drives, adjust the space ;
- Microcomputers table type oil source, manual valve control cabinet ,low noise independence chuck oil sources;
- proprietary inserting card type full digital and loop controlling system ,realized the testing force and displacement, deformation loop controlled, fully satisfy GB/ T228 – 2002's requirements of <<the metal room stretch the test methods>> ;
- The principal machine has low height , which is convenient for of transportation and installation.





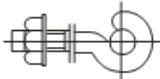


UNIVERSAL TESTING MACHINE (UTM)



Specification list:

model	WEW-300B	WEW-600B
columns	4 columns (2Stand columns, 2 guide screw)	4 columns (2Stand columns, 2 guide screw)
max.force	300kN	600kN
grade	1	1
force range	2%-100%FS	2%-100%FS
force resolution	1/500000	1/500000
force accuracy	±1%	±1%
displacement resolution	0.01mm	0.01mm
displacement accuracy	±0.5%	±0.5%
deformation range	1%-100%FS	1%-100%FS
deformation resolution	1/500000mm	1/500000mm
deformation accuracy	±0.5%	±0.5%
wedge clamp	hydraulic auto clamp	hydraulic auto clamp
round specimen	Φ13-Φ20 Φ20-Φ32(optional)	Φ13-Φ20 Φ20-Φ32(optional)
flat specimen thickness	0-15mm, 15-30mm(optional)	0-15mm, 15-30mm(optional)
flat specimen wide	75mm	75mm
press plate size	Φ120mm	Φ120mm
pull space	800mm	800mm
compression space	500mm	500mm
wide	500mm	500mm
weight	(machine) kgs 1850 (oil sources) kgs 300	(machine) kgs 1850 (oil sources) kgs 300
power	2.75KW 380V, 50HZ or 220V/60HZ	2.75KW 380V, 50HZ or 220V/60HZ

Configurations:

Item	Quantity	Remarks	Picture
Host WEW-300B 300kN			
High strength main unit	1 set	four screws and two columns	
Tensile fixture (Round Jaw)	1 set	Φ13-Φ20, Φ20-Φ32mm(optional)	
Tensile fixture (Flat Jaw)	1 set	0-15mm, 15-30mm(optional)	
Compression fixture	1 set	Φ160mm	
Bending fixture	1 set	Pressure Head: Φ30mm wide 160mm (optional)	
Foundation bolt	4 set		
Oil pressure sensor	1 set		
Linear photoelectric encoder	1 set		
Oil source control cabinet			
Computer display Oil Sources	1 set	Desktop	

UNIVERSAL TESTING MACHINE (UTM)



Oil pump	1 set	Italy imported Marzocchi	
Control System			
Control PC	1set	Lenovo famous brand	
Printer	1set	HP	
Special data acquisition card	1 suit	English language	
Extensometer	1set	(optional)	
Control software	1 suit		
Hand Control Box	1set		

Software: SMARTTEST

